

CUSTOM

Roller Shades

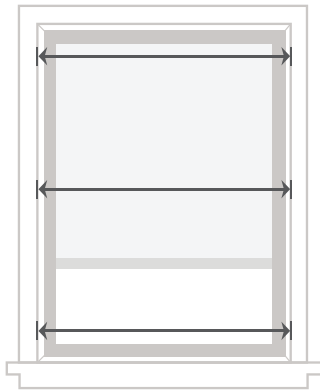
Fabric | Solar | Banded

TECHNICAL GUIDE

LEVOLOR®

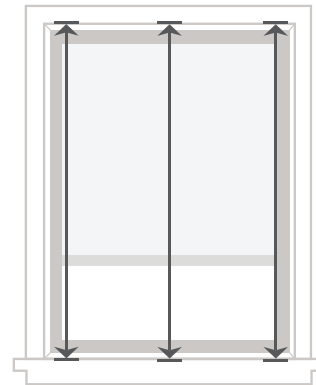
How To Measure Quickly & Accurately

Inside Mount



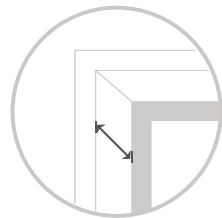
Measure Width

Measure inside the window frame horizontally in 3 places to the nearest $\frac{1}{8}$ inch: top, middle & bottom. The shortest measurement = **your width**.



Measure Height

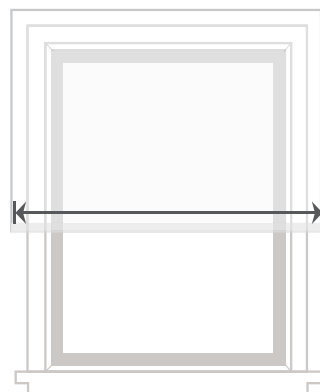
Measure inside the window frame vertically in 3 places to the nearest $\frac{1}{8}$ inch: left, middle & right. The longest measurement = **your height**.



Measure Depth

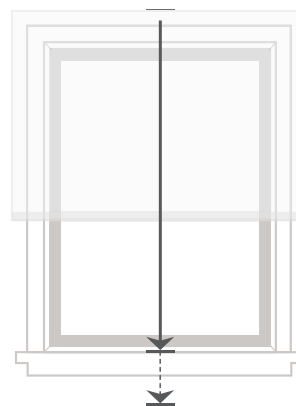
Measure the inside depth to the nearest $\frac{1}{8}$ inch at the top of the window frame. Be sure to consider any window obstacles. The shortest measurement = **your depth**.

Outside Mount



Measure Width

Measure horizontally to the nearest $\frac{1}{8}$ inch between the outer-most points where you want your window treatments placed. For optimal light control, it's recommended to overlap each side of the window frame by at least an additional $\frac{3}{4}$ inch.



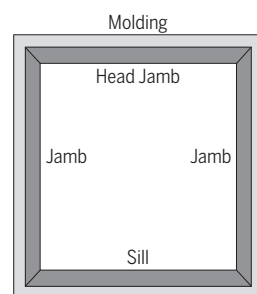
Measure Height

Measure vertically to the nearest $\frac{1}{8}$ inch from the top of where you want the window treatment to be installed (headrail location) to the top of the window sill, or measure to point of desired length if there is no sill. For Outside Mount, window treatments will be made to your exact measurements.

MEASURING TIPS

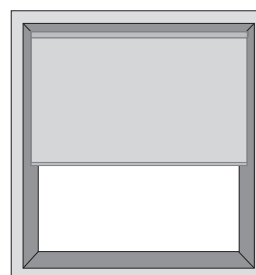
- Do not take deductions from your measurements. For Inside Mount, we will make adjustments to ensure a perfect fit.
- For Outside Mount installed outside of the window trim, you may need extension brackets or spacer blocks to account for the trim thickness.
- Measure each window - even ones that appear identical.
- All measurements should be to the nearest $\frac{1}{8}$ inch.
- Use a metal tape measure as cloth ones may stretch.

Window & Measuring Terminology



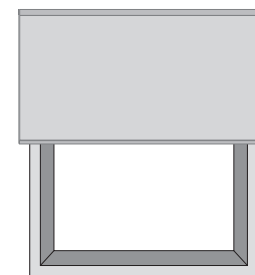
Window Components Terminology

- Collectively, the sill and jambs are called the "window casement" or "frame."



Inside Mount

- Shade fits within window opening.
- Great for windows with beautiful trim.



Outside Mount

- Shade mounts outside window opening.
- Increased light control and privacy.



2-on-1 Headrail

- Provides the clean appearance of a single shade with the ability to operate each shade independently.
- Can be mounted inside or outside.

How to Measure Two Shades on One Headrail (2-on-1 Headrail)

Inside Mount (IM) Installation

1 Measure Width

Total Shade Width — Measure to the nearest $\frac{1}{8}$ " between inside surfaces of window frame; at the top, middle, and bottom.

Record the narrowest width of the three.

Left Shade Width — Measure the width that you want the left shade to cover.

Order this shade first when placing your order.

Right Shade Width — Measure the width that you want the right shade to cover.

2 Measure Height

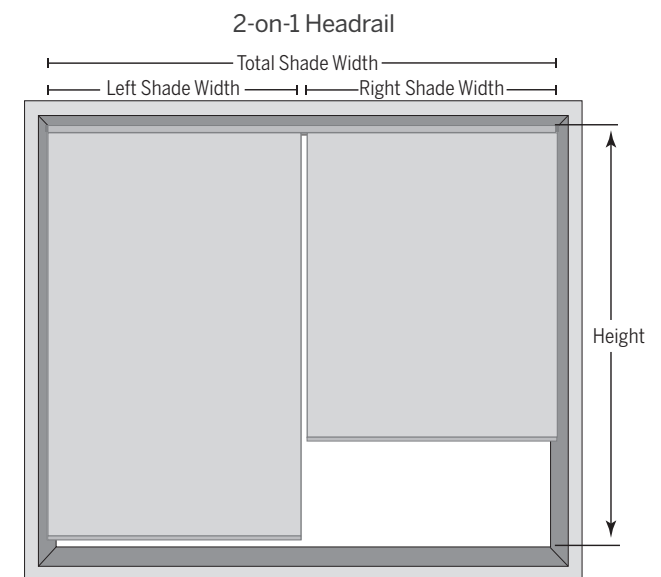
Overall Shade Height — Measure to the nearest $\frac{1}{8}$ " from inside surface at top of window to top of sill; at the left, middle, and right.

Record the tallest height of the three.

3 Measure Depth

Measure exact depth of window casing making note of any obstacles, i.e. handles, tracks, or cranks, that could interfere with the blind or shade function.

Use the shortest depth.



Outside Mount (OM) Installation

1 Measure Width

Overall Shade Width — Measure to the nearest $\frac{1}{8}$ " between outermost points where shade is to be placed.

Add an additional 3" to 6" to total width for maximum privacy.

Left Shade Width — Measure the width that you want the left shade to cover.

Order this shade first when placing your order.

Right Shade Width — Measure the width that you want the right shade to cover.

2 Measure Height

Overall Shade Height — Measure to the nearest $\frac{1}{8}$ " from where top of shade will be located to top of sill or, measure to point of shade reach if no sill.

2-ON-1 HELPFUL NOTES

- Each shade operates separately.
- There will be a gap between the fabric on the left and right shades to operate independently.
- Light gap is $1\frac{1}{16}$ in. — (Light Gap is the space needed between the 2 shades to ensure proper operation.)
- Left shade controls are on the left side and the right shade controls on the right side.
- Always use a metal tape measure as cloth may stretch.
- Take all measurements to the nearest $\frac{1}{8}$ in. DO NOT take any deductions.
- The factory will make the necessary adjustments to help ensure your shade operates smoothly.

Fabric and Solar Roller Specifications and Critical Dimensions

Use tables below to assist in purchasing, product size availability and product specifications. Please note the term "Cord Loop", in these pages, refers to a "beaded chain loop."

Beaded Chain Loop Lengths	
Default beaded chain length is 2/3 of total shade length.	
Custom beaded chain lengths can be requested at time of order.	
Custom beaded chain lengths available in 1" increments from 6" - 120".	
Beaded chains are provided in colors Aged Pewter, Gunmetal, and Stainless Steel.	

Standard Valance Installation Brackets (Outside Mount)	
Your order will include the correct number of installation brackets for your shade width, as shown in the table below	
Shade Width (inches)	Number of Brackets
Up to 60	2
60 to 96	3
96 to 132	4
132 to 144	5

Valance fabric may be rotated 90 degrees to the shade fabric.

Single Shade Critical Dimensions (inches)				
	Min Width	Max Width	Min Height	Max Height
Cord Loop	12	144	12	120
Cordless	18 1/8	96	12	120
Motorized	22	132	12	120

2-on-1 Critical Dimensions (inches)				
	Min Width	Max Width	Min Height	Max Height
Cord Loop	32	144	12	120
Cordless	36 1/4	144	12	120
Motorized	N/A	N/A	N/A	N/A

Shade Installation Brackets			
Your order will include the correct number of installation brackets for your shade width, as shown in the table below			
Shade Width (inches)	Number of Brackets		
	Cord Loop (Cassette Valance)	Cordless	Motorized
Up to 36	2	2	3
36 to 54	3	3	4
54 to 72	4	4	5
72 to 108	5	5	6
108 to 144	6	6	7

Cord Loop Open Roll and Standard Valance will have 2 mounting brackets regardless of width.

Light Gaps (Fabric width is narrower than the finished shade)			
Operating System	Lift Control	Light Gaps Per Side (inches)	
		Inside Mount	Outside Mount
Cord Loop	Left or right control, right is standard.	Up to 3/4	0
Cordless	Handle operates shade	Up to 9/16	0
Motorized	Right control only	Up to 3/4	0

Cassette valance typically has the largest light gap.

For standard 2-on-1 shades, controls will be located on the left side of the left shade and on the right side of the right shade.

Mounting Requirements			
	No Valance (inches)	Standard Valance (inches)	Cassette Valance (inches)
Inside Mount Minimum Installation Depth	1 1/2	1 1/2	2 1/8
Flush Mount Installation Depth*	2 1/2	3 1/4	Med. 3 Lg. 3 5/8
Outside Mount Extension Bracket Projection	1 1/8	1 1/8	3
Valance Height	N/A	3 1/2	Med. 3 Lg. 3 1/2

*Minimum surface area needed to mount the product flush with the window frame.

Difference from Order Width (No greater than the following) - DO NOT USE FOR MEASURING														
	Inside Mount							Outside Mount						
	No Valance		Fabric Valance		Cassette			No Valance		Fabric Valance		Cassette		
	Cord Loop	Cordless	Cord Loop	Cordless	Cord Loop	Cordless	Motorized	Cord Loop	Cordless	Cord Loop	Cordless	Cord Loop	Cordless	Motorized
Fabric Width (inches)	-1 5/8	-1 1/8	-1 5/8	-1 1/8	-1 3/4	-1 1/4	-1 1/2	-1 3/8	-7/8	-1 3/8	-7/8	-1 1/2	-1	-1 1/8
Valance Width (inches)	N/A	N/A	-3/8	-3/8	-1/2	-1/2	-1/2	N/A	N/A	2 1/2	2 1/2	-1/4	-1/4	-1/4
Product Width (inches)	-1/4	-1/4	-1/4	-1/4	-1/4	-1/4	-1/4	1/8	1/8	1/8	1/8	1/8	1/8	1/8

Drop height tolerance is +/- 1/2 inch.
Cassette valance will arrive with fabric insert. This cannot be overridden.

Banded Roller Product Specifications and Critical Dimensions

Use tables below to assist in purchasing, product size availability and product specifications.
The bottom bar is wrapped in fabric by default. This cannot be overridden.

Cord Loop Lengths	
Ordered Drop (inches)	Length (feet)
0-24	1
24-48	2
48-72	3
72-96	4
96-108	5
108-120	6

Fabric cords are provided in Ivory, Graphite, Light Gray, Taupe, and White.
Custom Cord Loop lengths available in 12" increments between 12" - 72".

Installation Brackets			
Your order will include the correct number of installation brackets for your shade width, as shown in the table below			
	Number of Brackets		
Shade Width (inches)	Cord Loop	Cordless	Motorized
Up to 36	2	2	3
36 to 54	3	3	4
54 to 72	4	4	5
72 to 108	5	5	6

Light Gaps (Fabric width is narrower than the finished shade)			
		Light Gaps Per Side (inches)	
Operating System	Lift Control	Inside Mount	Outside Mount
Cord Loop	Left or right control, right is standard	Up to $\frac{3}{4}$	0
Cordless	Handle operates shade	Up to $\frac{9}{16}$	0
Motorized	Right control only	Up to $\frac{3}{4}$	0

Cassette valance typically has the largest light gap.
For standard 2-on-1 shades, controls will be located on the left side of the left shade and the right side of the right shade.
The tolerance for vane alignment is $\frac{1}{8}$ inch.

Single Shade Critical Dimensions (inches)				
	Min Width	Max Width	Min Height	Max Height
Cord Loop	12	108	12	120
Cordless	24 $\frac{1}{8}$	63	12	84
Motorized	22	108	12	120

2-on-1-Critical Dimensions (inches)				
	Min Width	Max Width	Min Height	Max Height
Cord Loop	32	108	12	120
Cordless	48 $\frac{1}{4}$	108	12	84
Motorized	N/A	N/A	N/A	N/A

Mounting Depths Requirements	
	Cassette Valance (inches)
Minimum Installation Depth	2 $\frac{1}{8}$
Flush Mount Installation Depth*	3
Extension Bracket Projection	N/A
Valance Height	Med. 3 Lg 3 $\frac{1}{2}$

*Minimum surface area needed to mount the product flush with the window frame.

Difference from Order Width (No greater than the following) - DO NOT USE FOR MEASURING						
	Inside Mount			Outside Mount		
	Cord Loop	Cordless	Motorized	Cord Loop	Cordless	Motorized
Fabric Width (inches)	-1 $\frac{3}{8}$	-1 $\frac{1}{4}$	-1 $\frac{1}{4}$	-1 $\frac{1}{4}$	-1	-1 $\frac{1}{2}$
Valance Width (inches)	- $\frac{3}{8}$	- $\frac{3}{8}$	- $\frac{1}{2}$	- $\frac{1}{8}$	- $\frac{1}{8}$	- $\frac{1}{4}$
Product Width (inches)	- $\frac{1}{4}$	- $\frac{1}{4}$	- $\frac{1}{4}$	$\frac{1}{8}$	$\frac{1}{8}$	$\frac{1}{8}$

Drop height tolerance is $-/+ \frac{1}{2}$ inch.
Cassette valance will arrive with fabric insert. This cannot be overridden.

Index – Fabric Roller

Fabrics — No Liner					
Collection	Color	OE Key	Cassette, End Caps, Tensioner	Cordless - Headrail and Brackets	Beaded Chain
Engraved	Dark Gray	310GY018	Gray	Black	Gunmetal
	Light Gray	10333328	Gray	White	Gunmetal
	Sand	10333327	Cream	White	Stainless Steel
	Summer Sky	103BL002	White	White	Stainless Steel
	Toffee	310BR047	Cream	White	Stainless Steel
	Whisper	10333329	White	White	Stainless Steel
Fala Pango	Doe	103BE003	Cream	White	Stainless Steel
	Gold	310GT005	Cream	White	Stainless Steel
	Kenya	103ST011	Cream	White	Stainless Steel
	Silver	310SL004	White	White	Stainless Steel
	Storm Cloud	103GY013	Gray	Black	Gunmetal
Lemongrass Stripe	Champagne	10333337	Cream	White	Stainless Steel
	Cream	10333336	Cream	White	Stainless Steel
	Light Gray	10333339	Gray	Black	Gunmetal
	Mocha	10333338	Brown	Black	Aged Pewter
	White	310WH028	White	White	Stainless Steel
Tweed Rattan	Blue	310BL009	Gray	Black	Gunmetal
	Champagne	10333341	Cream	White	Stainless Steel
	Cinnamon	10333342	Brown	Black	Aged Pewter
	Latte	10333345	Brown	Black	Aged Pewter
	Mocha	10333343	Brown	Black	Aged Pewter
Woodgrain	Champagne	10333332	Cream	White	Stainless Steel
	Dark Gray	310GY019	Gray	Black	Gunmetal
	Gray	310GY070	White	White	Stainless Steel
	Snow	310WH074	White	White	Stainless Steel
	Toffee	10333333	Cream	White	Stainless Steel

Fabrics in the table above on this page cannot be railroaded.

Index – Fabric Roller

Fabrics - Light Filtering and Room Darkening						
Collection	Color	OE Key (Light Filtering)	OE Key (Room Darkening)	Cassette, End Caps, Tensioner	Cordless - Headrail and Brackets	Beaded Chain
Atlas	Burro	311BR042	312BR042	Cream	White	Stainless Steel
	Dark Gray	311GY067	312GY067	Gray	Black	Aged Pewter
	Riesling	311YW012	312YW012	Cream	White	Stainless Steel
	Silver	311WH067	312WH067	White	White	Stainless Steel
	Warm White	311WH068	312WH068	White	White	Stainless Steel
Blossom	Fig	321PR039	322PR039	Cream	White	Stainless Steel
	Plum	321PR040	322PR040	Cream	White	Stainless Steel
Designer Textures*	Blue	301BL010	302BL010	Black	Black	Gunmetal
	Graphite	11370345	12370345	Gray	Black	Gunmetal
	Light Gray	11370343	12370343	Gray	Black	Gunmetal
	Maroon	301RE005	302RE005	Brown	Black	Aged Pewter
	Mink	301BR020	302BR020	Brown	Black	Aged Pewter
	Sand	301BE008	302BE008	Cream	White	Stainless Steel
	Taupe	301BE002	302BE002	Brown	Black	Gunmetal
	Whisper	11370200	12370200	White	White	Stainless Steel
Divine	Ash	321PR041	322PR041	Gray	Black	Gunmetal
	Cloud	321PR042	322PR042	White	White	Stainless Steel
	Flax	321PR043	322PR043	Cream	White	Stainless Steel
Finley	Chestnut	321PR048	322PR048	White	White	Stainless Steel
	Storm Cloud	321PR047	322PR047	White	White	Stainless Steel
Flourish	Celeste	321PA010	322PA010	Gray	White	Aged Pewter
	Ivory	321PA008	322PA008	Cream	White	Stainless Steel
	Mink	321PA011	322PA011	Brown	Black	Gunmetal
Forre*	Black	301BK011	302BK011	Black	Black	Gunmetal
	Burgundy	301RE018	302RE018	Black	Black	Gunmetal
	Denim	301BL019	302BL019	Black	Black	Gunmetal
	Taupe	301BE028	302BE028	Cream	White	Stainless Steel
	White	301WH065	302WH065	White	White	Stainless Steel
Heathered	Cream	113MT015	123MT015	Cream	White	Stainless Steel
	Graphite	113MT016	123MT016	Gray	Black	Gunmetal
	Sand	113MT018	123MT018	Cream	White	Stainless Steel
	Slate	113MT019	123MT019	Gray	Black	Gunmetal
	Whisper	113MT021	123MT021	White	White	Stainless Steel
Lugo	Cream	311WH073	312WH073	Cream	White	Stainless Steel
	Silver	311SL003	312SL003	Gray	White	Stainless Steel
	Soft Blush	311WH072	312WH072	White	White	Stainless Steel
Seclusions*	Biscuit	30135024	30235024	Cream	White	Stainless Steel
	Champagne	30135026	30235026	Brown	Black	Aged Pewter
	Graphite	30135028	30235028	Gray	Black	Gunmetal
	Light Gray	30135027	30235027	Gray	Black	Gunmetal
	White	30135021	30235021	White	White	Stainless Steel
Valour	Flint	321PR044	322PR044	Cream	White	Stainless Steel
	Iron	321PR045	322PR045	Cream	White	Stainless Steel
	Slate	321PR046	322PR046	Cream	White	Stainless Steel

*These fabrics may be railroaded i.e. turned 90 degrees to achieve a shade width above the material width limits, to a maximum of 144". In such cases a seam will be sewn across the width of the shade, positioned as close to the top as possible. Any valance chosen will span the width of the shade, to maximum 144".

Index – Fabric Roller

Fabrics – Blockout					
Collection	Color	OE Key	Cassette, End Caps, Tensioner	Cordless - Headrail and Brackets	Beaded Chain
Contemporary Blockout*	Black	10333347	Black	Black	Stainless Steel
	Cement	10333350	Black	Black	Gunmetal
	Ivory	10333348	Cream	White	Stainless Steel
	Off White	10333351	Cream	White	Stainless Steel
	Pepper	10333346	Gray	Black	Gunmetal
Tempest Blockout	Cream	303WH033	Cream	White	Stainless Steel
	Dark Gray	303GY024	Gray	Black	Gunmetal
	Gray	303GY021	Gray	Black	Gunmetal
	Silver	303SL002	Gray	Black	Gunmetal
	Tan	303GY023	Cream	White	Stainless Steel
Woven Blockout	Black	303BK002	Black	Black	Stainless Steel
	Champagne	303YW004	Brown	Black	Aged Pewter
	Charcoal	303GY029	Black	Black	Gunmetal
	Cream	303WH034	Cream	White	Stainless Steel
	Sand	303BE010	Cream	White	Stainless Steel

*These fabrics may be railroaded i.e. turned 90 degrees to achieve a shade width above the material width limits, to a maximum of 144". In such cases a seam will be sewn across the width of the shade, positioned as close to the top as possible. Any valance chosen will span the width of the shade, to maximum 144".

Index – Solar Roller

Solar						
Collection	Color	OE Key	Openness	Cassette, End Caps, Tensioner	Cordless - Headrail and Brackets	Beaded Chain
Solar Screen 1*	Black	33527017	1%	Black	Black	Stainless Steel
	Brown	335BR021		Brown	Black	Aged Pewter
	Gray	33520803		Gray	Black	Gunmetal
	Iron	335GY012		Gray	Black	Gunmetal
	Sand	33520864		Cream	White	Stainless Steel
	White	335WH024		White	White	Stainless Steel
	White Sand	33527014		Cream	White	Stainless Steel
Solar Screen 3*	Black	10327017	3%	Black	Black	Stainless Steel
	Brown	336BR021		Brown	Black	Aged Pewter
	Gray	33620803		Gray	Black	Gunmetal
	Iron	336GY012		Gray	Black	Gunmetal
	Sand	10327015		Cream	White	Stainless Steel
	White	10327013		White	White	Stainless Steel
	White Sand	10327014		Cream	White	Stainless Steel
Solar Screen 5*	Black	33727017	5%	Black	Black	Stainless Steel
	Brown	337BR021		Brown	Black	Aged Pewter
	Gray	10320803		Gray	Black	Gunmetal
	Iron	337GY012		Gray	Black	Gunmetal
	Sand	10320864		Cream	White	Stainless Steel
	White	10320811		White	White	Stainless Steel
	White Sand	33727014		Cream	White	Stainless Steel
Solar Screen 10*	Black	33827017	10%	Black	Black	Stainless Steel
	Brown	338BR021		Brown	Black	Aged Pewter
	Gray	33820803		Gray	Black	Gunmetal
	Iron	103GY012		Gray	Black	Gunmetal
	Sand	33820864		Cream	White	Stainless Steel
	White	10320911		White	White	Stainless Steel
	White Sand	33827014		Cream	White	Stainless Steel
Solar Screen Basket	Black	334BK004	8%	Black	Black	Stainless Steel
	White	334WH031		White	White	Stainless Steel
Solar Screen Easton	Dark Gray	338GY074	10%	Black	Black	Gunmetal
	Gray	338GY073		Gray	White	Stainless Steel
Solar Screen Metro	Dark Gray	334GY027	3%	Gray	Black	Gunmetal
	Gray	334GY028		Gray	Black	Gunmetal
	Tan	334BR024		Cream	White	Stainless Steel
Solar Screen Nova	Champagne	336YW015	3%	Cream	White	Stainless Steel
	Gray	336GY072		Gray	White	Stainless Steel
	Sand	336BE032		Cream	White	Stainless Steel
Solar Screen Scholar	Brown	334BR023	18%	Brown	Black	Aged Pewter
	Champagne	334YW005		Brown	Black	Aged Pewter
	Cream	334WH032		Cream	White	Stainless Steel
Solar Screen Tides	Black	10333377	12%	Black	Black	Stainless Steel
	Champagne	10333376		Brown	Black	Aged Pewter
	Espresso	10329851		Black	Black	Stainless Steel
	Gray	334GY020		Gray	Black	Gunmetal
	White	10333374		White	White	Stainless Steel
Woven Screen*	Slate	334GY071	9%	Gray	Black	Aged Pewter
	Tan	334BR048		Cream	White	Stainless Steel

*These fabrics may be railroaded i.e. turned 90 degrees to achieve a shade width above the material width limits, to a maximum of 144". In such cases a seam will be sewn across the width of the shade, positioned as close to the top as possible. Any valance chosen will span the width of the shade, to maximum 144".

Index – Banded Roller

Banded — Light Filtering					
Collection	Color	OE Key	Cassette, End Caps, Bottom Rail, Tensioner	Cord Loop	Vane/Sheer Height (inches)
Bliss	Ivory	4H1WH046	Cream	Ivory	3.0 / 1.9
	Powder	4H1WH045	Cream	White	
	Seaweed	4H1GE008	Brown	Ivory	
	Smoke	4H1GY040	Gray	Light Gray	
Elements	Coffee	4J1BR031	Brown	Taupe	2.9 / 2.1
	Steel	4J1BL011	Gray	Graphite	
Jubilee	Black	4D1BK006	Black	Graphite	2.8 / 1.9
	Coconut	4D1WH041	Cream	Ivory	
	Dark Gray	4D1GY037	Black	Graphite	
	Light Gray	4D1GY036	Gray	Light Gray	
	Light Taupe	4D1BE013	Brown	Ivory	
	Taupe	4D1BE012	Brown	Ivory	
	White	4D1WH040	White	White	
Noble	Burgundy	4B1RE006	Brown	Taupe	3.0 / 1.8
	Cream	4B1WH035	Cream	White	
	Dark Gray	4B1GY032	Black	Graphite	
	Light Gray	4B1GY031	Gray	Light Gray	
Spree	Black	4J1BK007	Black	Graphite	3.0 / 1.9
	Graphite	4I1GY043	Black	Graphite	
	Ivory	4I1WH050	Cream	Ivory	
	Nickel	4I1GY042	Gray	Light Gray	
	Powder	4I1WH047	Cream	White	
Terra	Beige	4C1BE011	Brown	Ivory	2.9 / 1.9
	Black	4C1BK005	Black	Graphite	
	Blue Gray	4C1GY034	Gray	Light Gray	
	Brown	4C1BR026	Brown	Taupe	
	Dark Gray	4C1GY035	Black	Graphite	
	Ivory	4C1WH039	Cream	Ivory	
	White	4C1WH038	White	Light Gray	
Uptown	Birch	4A1WH036	Cream	White	3.0 / 2.1
	Gray	4A1GY033	Gray	Light Gray	
	Oatmeal	4A1WH037	Cream	White	

Banded — Room Darkening					
Collection	Color	OE Key	Cassette, End Caps, Bottom Rail, Tensioner	Cord Loop	Vane/Sheer Height (inches)
Belmont	Gray	4K2GY075	Gray	Graphite	3.0 / 2.0
	Ivory	4K2WH076	Cream	Ivory	
	White	4K2WH075	White	White	
Brilliance	Chocolate	4E2BR027	Brown	Ivory	3.0 / 1.8
	Graphite	4E2GY044	Black	Graphite	
	Gray	4E2GY038	Gray	Light Gray	
	White	4E2WH042	White	Light Gray	
Tranquil	Brown	4F2BR028	Brown	Ivory	2.9 / 1.9
	Coconut	4F2WH044	Brown	Ivory	
	Ivory	4F2WH043	Cream	Ivory	

Color Coordination Guide

Coordinating components are pre-selected based on fabric color.

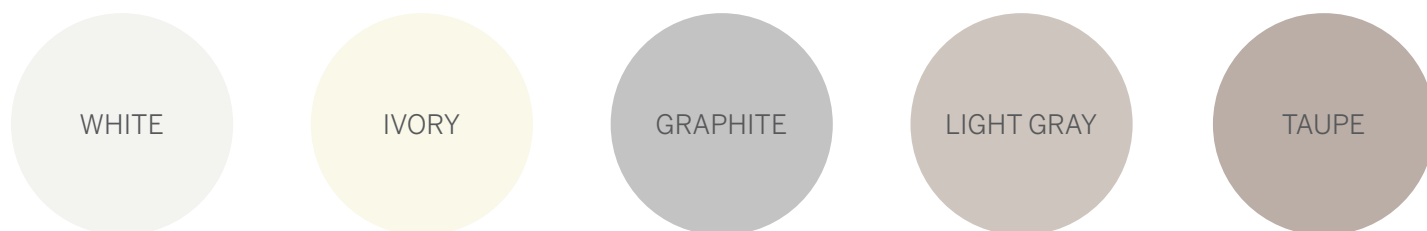
Cassette/End Cap/Tensioner



Roller Bead Chain



Banded Cloth Cord Loop



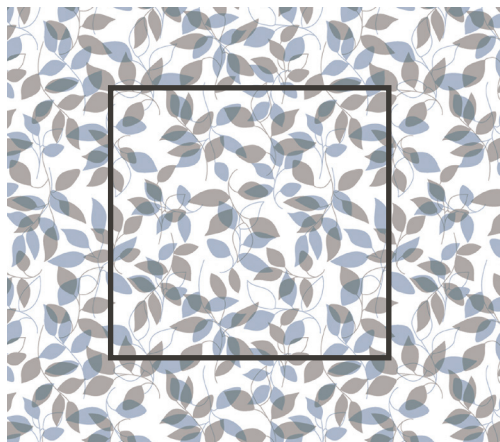
NOTE: The actual color of the hardware may vary from the samples in the color coordination guide.

Color lot variations may occur with fabric and/or hardware due to the process of color application. For the best color match, order all shades for a room at the same time. Pattern availability and color lot matching between orders cannot be assured.

Pattern Fabrics

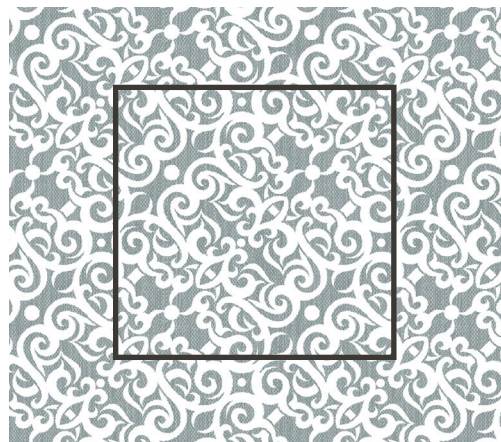
Divine

Approximate repeat size: 12.6" x 12.6"



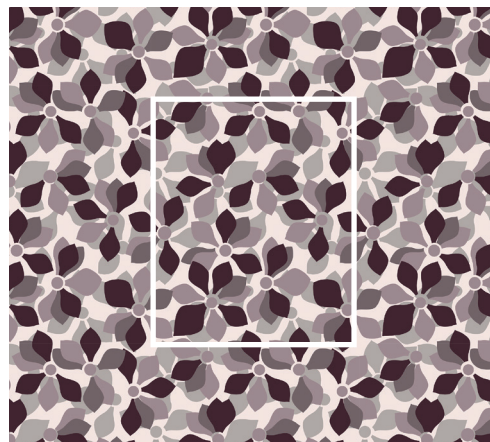
Valour

Approximate repeat size: 8.4" x 8.4"



Blossom

Approximate repeat size: 12.6" x 15.6"



Finley

Approximate repeat size: 13.5" x 27.0"



Index – Fabric Roller Size Charts

SIZE STANDARDS Maximum Height Per Width	CORD LOOP																
Width To:	24"	30"	36"	42"	48"	54"	60"	66"	70"	72"	78"	84"	96"	108"	120"	132"	144"
Fala Pango	120"	120"	120"	120"	120"	120"	120"	120"	120"	N/A	N/A	N/A	N/A	N/A	N/A	N/A	N/A
Engraved, Heathered, Lemongrass Stripe, Tweed Rattan, Woodgrain	120"	120"	120"	120"	120"	120"	120"	120"	120"	120"	N/A	N/A	N/A	N/A	N/A	N/A	N/A
Forre, Lugo	120"	120"	120"	120"	120"	120"	120"	120"	120"	120"	120"	N/A	N/A	N/A	N/A	N/A	N/A
Blossom, Divine, Finley, Valour	120"	120"	120"	120"	120"	120"	120"	120"	120"	120"	120"	120"	N/A	N/A	N/A	N/A	N/A
Atlas, Flourish, Tempest Blockout, Woven Blockout	120"	120"	120"	120"	120"	120"	120"	120"	120"	120"	120"	120"	120"	N/A	N/A	N/A	N/A
Contemporary Blockout, Designer Textures, Seclusions	120"	120"	120"	120"	120"	120"	120"	120"	120"	120"	60"	60"	60"	60"	60"	60"	60"
SIZE MINIMUMS	Minimum Width: 12"																
	Minimum Height: 12"																
NOTE: 2-on-1 Headrail: Maximum width is 144"; per panel minimum and maximum widths and heights are the same as single panel shades.																	

SIZE STANDARDS Maximum Height Per Width	CORDLESS																
Width To:	26.875"	30"	36"	42"	48"	54"	60"	66"	70"	72"	78"	84"	96"	108"	120"	132"	144"
Fala Pango	36"	78"	78"	120"	120"	120"	120"	120"	120"	N/A	N/A	N/A	N/A	N/A	N/A	N/A	N/A
Engraved, Heathered, Lemongrass Stripe, Tweed Rattan, Woodgrain	24"	78"	78"	120"	120"	120"	120"	120"	120"	120"	N/A	N/A	N/A	N/A	N/A	N/A	N/A
Forre, Lugo	18"	78"	78"	120"	120"	120"	120"	120"	120"	120"	120"	N/A	N/A	N/A	N/A	N/A	N/A
Blossom, Divine, Finley, Valour	30"	78"	78"	120"	120"	120"	120"	120"	120"	120"	120"	120"	N/A	N/A	N/A	N/A	N/A
Atlas, Flourish, Tempest Blockout	18"	78"	78"	120"	120"	120"	120"	120"	120"	120"	120"	120"	120"	N/A	N/A	N/A	N/A
Woven Blockout	18"	78"	72"	120"	120"	120"	120"	120"	120"	120"	120"	120"	120"	N/A	N/A	N/A	N/A
Contemporary Blockout, Designer Textures, Seclusions	24"	78"	78"	120"	120"	120"	120"	120"	120"	120"	60"	60"	60"	N/A	N/A	N/A	N/A
SIZE MINIMUMS	Minimum Width: 18.125"																
	Minimum Height: 12"																
NOTE: 2-on-1 Headrail: Maximum width is 144"; per panel minimum and maximum widths and heights are the same as single panel shades.																	

SIZE STANDARDS Maximum Height Per Width	MOTORIZED																
Width To:	24"	30"	36"	42"	48"	54"	60"	66"	70"	72"	78"	84"	96"	108"	120"	132"	144"
Fala Pango	120"	120"	120"	120"	120"	120"	120"	120"	120"	N/A	N/A	N/A	N/A	N/A	N/A	N/A	N/A
Engraved, Heathered, Lemongrass Stripe, Tweed Rattan, Woodgrain	120"	120"	120"	120"	120"	120"	120"	120"	120"	120"	N/A	N/A	N/A	N/A	N/A	N/A	N/A
Forre, Lugo	120"	120"	120"	120"	120"	120"	120"	120"	120"	120"	120"	N/A	N/A	N/A	N/A	N/A	N/A
Blossom, Divine, Finley, Valour	120"	120"	120"	120"	120"	120"	120"	120"	120"	120"	120"	120"	N/A	N/A	N/A	N/A	N/A
Flourish, Tempest Blockout, Woven Blockout	120"	120"	120"	120"	120"	120"	120"	120"	120"	120"	120"	120"	120"	N/A	N/A	N/A	N/A
Atlas	120"	120"	120"	120"	120"	120"	120"	120"	120"	120"	120"	120"	60"	N/A	N/A	N/A	N/A
Contemporary Blockout, Designer Textures, Seclusions	120"	120"	120"	120"	120"	120"	120"	120"	120"	120"	60"	60"	60"	60"	42"	36"	N/A
SIZE MINIMUMS	Minimum Width: 22"																
	Minimum Height: 12"																

Index – Solar Roller Size Charts

SIZE STANDARDS Maximum Height Per Width	CORD LOOP															
Width To:	24"	30"	36"	42"	48"	54"	60"	66"	72"	78"	84"	96"	108"	120"	132"	144"
Solar Screen Basket, Solar Screen Easton, Solar Screen Metro, Solar Screen Nova, Solar Screen Scholar, Solar Screen Tides	120"	120"	120"	120"	120"	120"	120"	120"	120"	120"	120"	120"	N/A	N/A	N/A	N/A
Solar Screen 1, Solar Screen 3, Solar Screen 5, Solar Screen 10, Woven Screen	120"	120"	120"	120"	120"	120"	120"	120"	120"	120"	120"	120"	84"	84"	60"	36"
SIZE MINIMUMS	Minimum Width: 12"															
	Minimum Height: 12"															
NOTE: 2-on-1 Headrail: Maximum width is 144"; per panel minimum and maximum widths and heights are the same as single panel shades.																

SIZE STANDARDS Maximum Height Per Width	CORDLESS															
Width To:	26.875"	30"	36"	42"	48"	54"	60"	66"	72"	78"	84"	96"	108"	120"	132"	144"
Solar Screen 1, Solar Screen 3, Solar Screen 5	N/A	60"	48"	120"	120"	120"	120"	120"	120"	120"	120"	96"	N/A	N/A	N/A	N/A
Solar Screen Basket	N/A	60"	42"	120"	120"	120"	120"	120"	120"	120"	120"	102"	N/A	N/A	N/A	N/A
Solar Screen 10	N/A	78"	66"	120"	120"	120"	120"	120"	120"	120"	120"	120"	N/A	N/A	N/A	N/A
Solar Screen Scholar, Solar Screen Tides	18"	72"	66"	120"	120"	120"	120"	120"	120"	120"	120"	120"	N/A	N/A	N/A	N/A
Solar Screen Metro	18"	78"	72"	120"	120"	120"	120"	120"	120"	120"	120"	120"	N/A	N/A	N/A	N/A
Solar Screen Easton, Solar Screen Nova, Woven Screen	18"	78"	78"	120"	120"	120"	120"	120"	120"	120"	120"	120"	N/A	N/A	N/A	N/A
SIZE MINIMUMS	Minimum Width: 18.125" ; Solar Screens 1,3,5,10, Solar Screen Basket: 27"															
	Minimum Height: 12"															
NOTE: 2-on-1 Headrail: Maximum width is 144" ; per panel minimum and maximum widths and heights are the same as single panel shades.																

SIZE STANDARDS Maximum Height Per Width	MOTORIZED															
Width To:	24"	30"	36"	42"	48"	54"	60"	66"	72"	78"	84"	96"	108"	120"	132"	144"
Solar Screen Easton, Solar Screen Metro, Solar Screen Nova, Solar Screen Scholar, Solar Screen Tides	120"	120"	120"	120"	120"	120"	120"	120"	120"	120"	120"	120"	N/A	N/A	N/A	N/A
Solar Screen 1, Solar Screen 3, Solar Screen 5, Solar Screen 10, Solar Screen Basket	120"	120"	120"	120"	120"	120"	120"	120"	120"	96"	96"	96"	N/A	N/A	N/A	N/A
Woven Screen	120"	120"	120"	120"	120"	120"	120"	120"	120"	60"	60"	60"	60"	42"	30"	N/A
SIZE MINIMUMS	Minimum Width: 22"															
	Minimum Height: 12"															

Index – Banded Roller Size Charts

SIZE STANDARDS Maximum Height Per Width	CORD LOOP													
Width To:	18"	24"	30"	36"	42"	48"	54"	60"	66"	72"	78"	84"	96"	108"
Belmont, Bliss, Brilliance, Elements, Jubilee, Noble, Terra, Tranquil, Uptown	120"	120"	120"	120"	120"	120"	120"	120"	120"	120"	120"	120"	120"	120"
Spree	120"	120"	120"	120"	120"	120"	120"	120"	120"	120"	120"	120"	120"	N/A
SIZE MINIMUMS	Minimum Width: 12"													
	Minimum Height: 12"													
NOTE: 2-on-1 Headrail: maximum width is 108"; per panel minimum and maximum widths and heights are the same as single panel shades.														

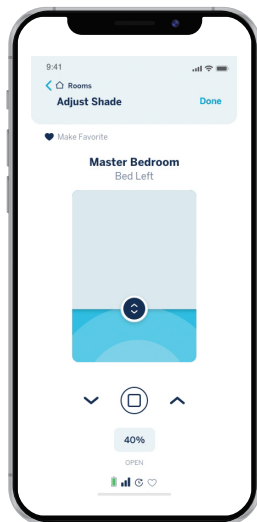
SIZE STANDARDS Maximum Height Per Width	CORDLESS													
Width To:	18"	24"	34.375"	36"	42"	48"	54"	60"	63"	72"	78"	84"	96"	108"
Bliss, Elements, Jubilee, Noble, Spree, Terra, Uptown	N/A	N/A	48"	72"	72"	78"	84"	84"	84"	N/A	N/A	N/A	N/A	N/A
Brilliance, Tranquil	N/A	N/A	48"	72"	60"	78"	84"	72"	66"	N/A	N/A	N/A	N/A	N/A
Belmont	N/A	N/A	36"	60"	48"	60"	66"	66"	60"	N/A	N/A	N/A	N/A	N/A
SIZE MINIMUMS	Minimum Width: 24.125"													
	Minimum Height: 12"													
NOTE: 2-on-1 Headrail: Maximum width is 126" ; per panel minimum and maximum widths and heights are the same as single panel shades.														

SIZE STANDARDS Maximum Height Per Width	MOTORIZED													
Width To:	18"	24"	30"	36"	42"	48"	54"	60"	66"	72"	78"	84"	96"	108"
Belmont, Bliss, Brilliance, Elements, Jubilee, Noble, Terra, Tranquil, Uptown	N/A	120"	120"	120"	120"	120"	120"	120"	120"	120"	120"	96"	96"	42"
Spree	N/A	120"	120"	120"	120"	120"	120"	120"	120"	120"	120"	96"	96"	N/A
SIZE MINIMUMS	Minimum Width: 22"													
	Minimum Height: 12"													

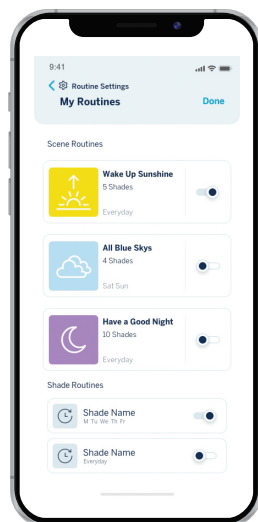
Motorization Overview

LEVOLOR® InMotion™

Experience motorization like never before with smart home integration and automated scheduling. Take full control of your shades using voice command, the intuitive app, or remote.



App - Shade Control
Phone sold separately



App - Routines
Phone sold separately



Remote



Hub

- Upgrade to motorization to control shades with remote or app.
- Powered by an integrated, rechargeable lithium-ion battery.
- Recharge with included magnetic micro-USB charger.
- Control shades with the 15-channel remote (sold separately).
- Add the hub (sold separately) to sync with your Wi-Fi to enable app control and smart home integration.
- Organize shades by room.
- See real-time shade position and battery charge status.
- Store preset shade positions as scenes.
- Create routines by scheduling scenes by day of week and time of day, even proximity to sunrise or sunset.
- Adjust shades when you are away from home.
- Links with Amazon Alexa, Google Home, and IFTTT.
- App available to download for iOS and Android devices.

NOTE: LEVOLOR® InMotion™ is not compatible with products from the previous LEVOLOR® motorization program. This includes blinds/shades that are controlled with the previous LEVOLOR app, 3-channel remote, and 6-channel remote.

Visit levolor.com/InMotion for additional information.

Cleaning and Care

All LEVOLOR Roller Shades have multiple cleaning options.

Note: Improper cleaning may void warranty



DUSTING

Use a feather duster for regular cleaning.



VACUUMING

Use a low suction vacuum with a brush-type cleaner attachment; stroke lightly over the shade to clean.



FORCED AIR

Blow away dirt and debris using clean compressed air.



SPOT-CLEANING/STAIN REMOVAL AT HOME

Use warm water and a mild soap, like Woolite® or Scotchgard®, if needed.



PROFESSIONAL INJECTION/EXTRACTION CLEANING

Call local on-site blind/shade cleaner that injects a cleaning solution into the fabric and extracts the dirty solution at the same time. The service is typically performed at home so you do not need to remove your window treatments.

The following information, listed below, is available online at LEVOLOR.com

- Terms and Conditions
- Order Processing
- Freight
- Claims and Returns
- Warning and Safety Information
- Warranty

Parts & Components

Cord Loop		Component Part Number
A & B	Installation Brackets, open roll	2045145, 2045146
A & B	Installation Brackets, standard valance	2045145, 2045146
C	Installation Brackets, cassette (inside mount)	2045141
C & D	Installation Brackets, cassette (outside mount)	2045141, 1030737
E	Valance Mounting Bracket (outside mount)	1030738
F	Hold Down kit	DJL01873
G	Roller Tension Device - Black	1031617
G	Roller Tension Device - Brown	1031618
G	Roller Tension Device - Cream	1031642
G	Roller Tension Device - Gray	1031649
G	Roller Tension Device - White	1031619
H	Banded Tension Device - Black	1031653
H	Banded Tension Device - Brown	1031654
H	Banded Tension Device - Cream	1031658
H	Banded Tension Device - Gray	1031665
H	Banded Tension Device - White	1031655

Cordless		Component Part Number
I	Installation Brackets, open roll (inside mount)	1898879
J	Installation Brackets, open roll (outside mount)	1904870
I	Installation Brackets, standard valance (inside mount)	1898879
J	Installation Brackets, standard valance (outside mount)	1904870
C	Installation Brackets, cassette (inside mount)	2045141
C & D	Installation Brackets, cassette (outside mount)	2045141, 1030737
E	Valance Mounting Bracket (outside mount)	1030738
F	Hold Down kit	DJL01873
K & L	Optional handle, Fabric and Solar / Banded	1858599 / 2045169
M	Optional tassel, Fabric and Solar	1851720

Motorized		Component Part Number
C	Installation Brackets, cassette (inside mount)	2045141
C & D	Installation Brackets, cassette (outside mount)	2045141, 1030737
N	Remote Control Kit	1029591
O	Hub	1029593
P	10' Micro-USB to USB Charging Cable (not shown)	62206300
Q	1' Magnetic Charging Adapter (not shown)	62206100
R	Magnetic Insert (not shown)	62206200
S	Power Adapter (not shown)	62200000

